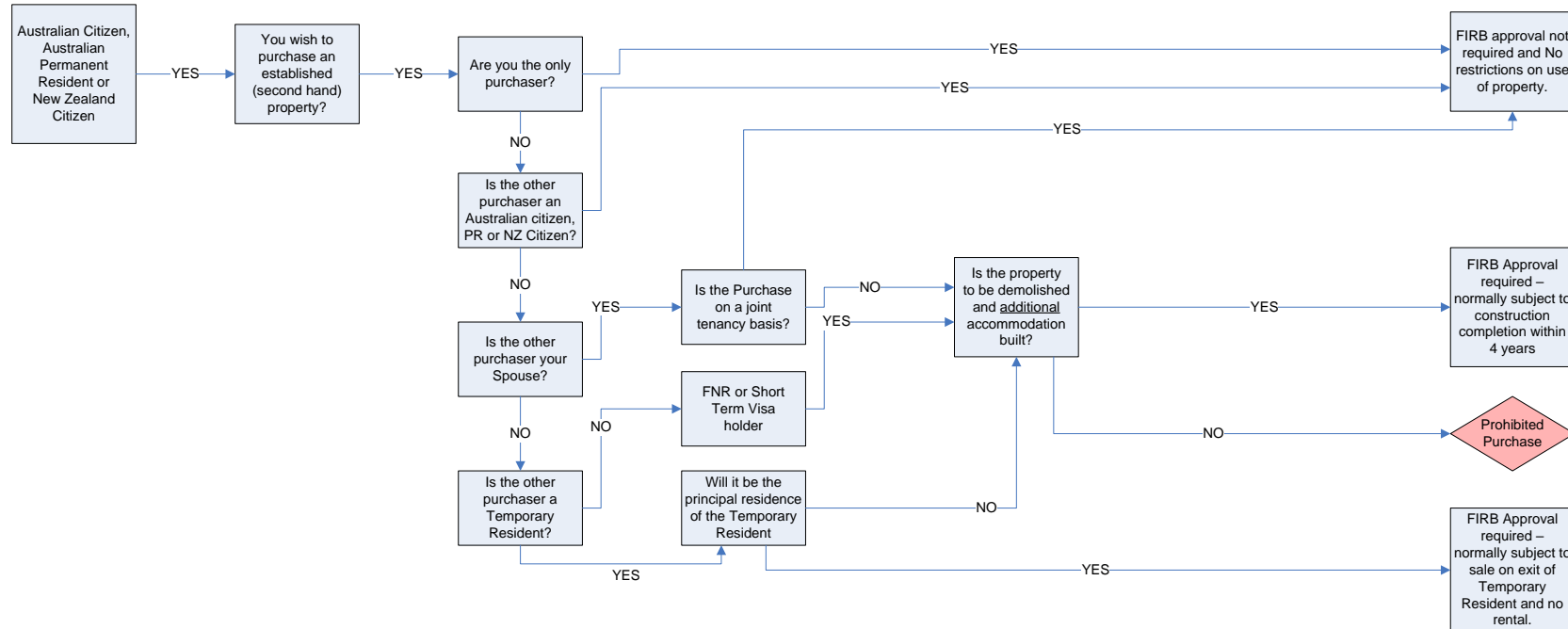
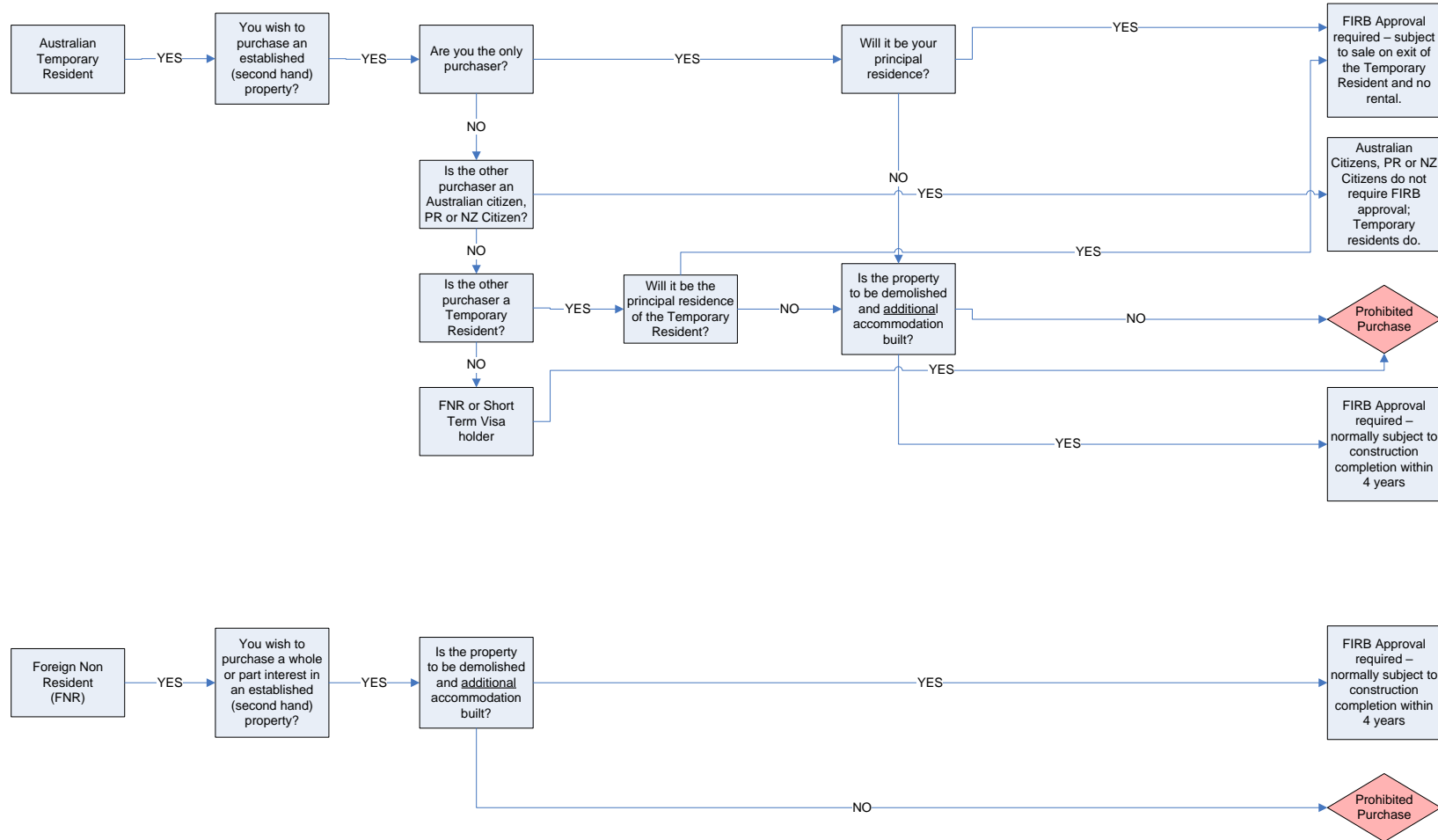


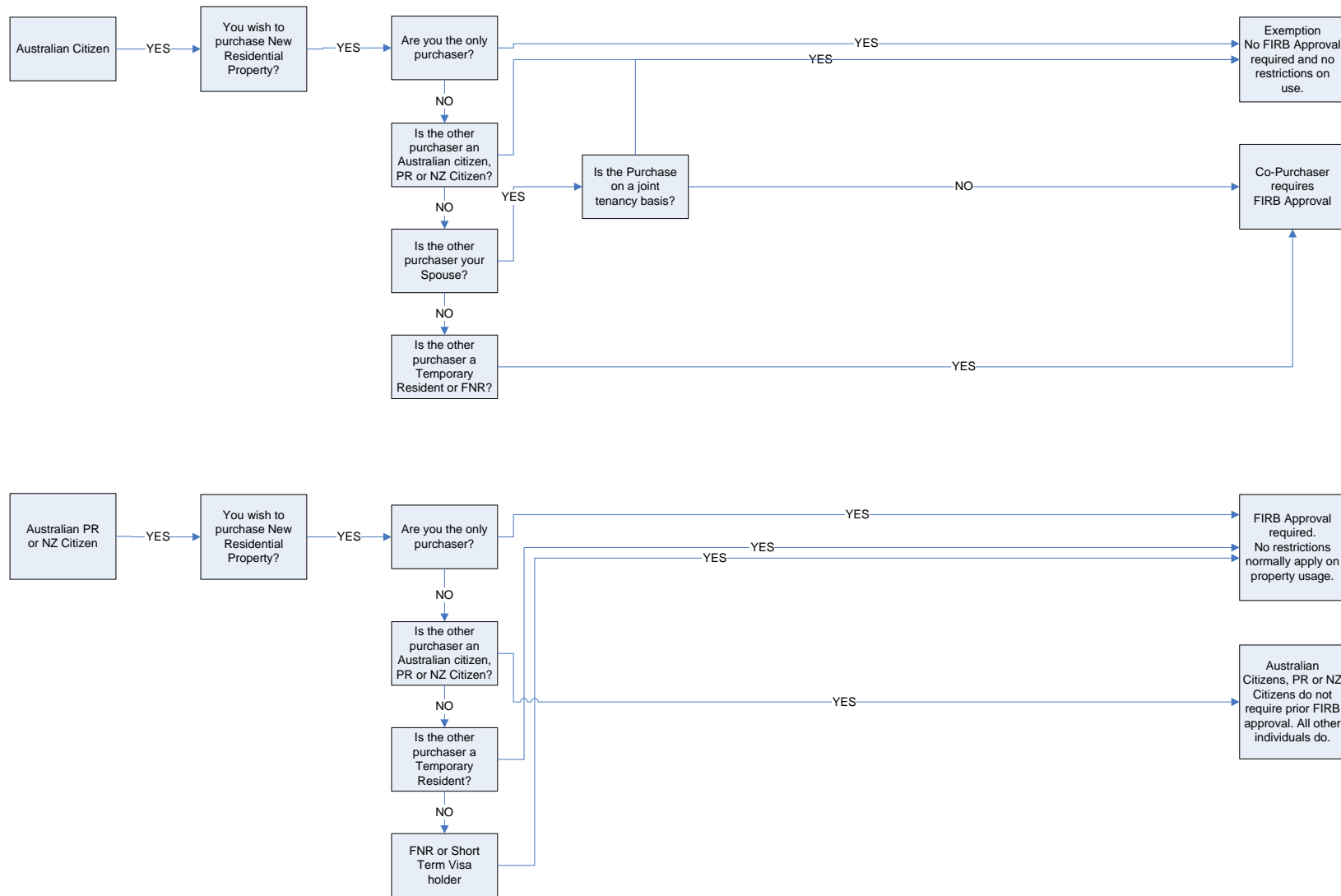
The Purchase of **ESTABLISHED** Residential Property in Australia – Regulatory Flowchart – Part 1



The Purchase of **ESTABLISHED** Residential Property in Australia – Regulatory Flowchart – Part 2



The Purchase of **NEW** Residential Property in Australia – Regulatory Flowchart – Part 1



Disclaimer : Whilst Exfin International (Exfin) has taken every reasonable care to ensure that the information displayed above is correct there is no intention that it be relied upon in any context or manner whatsoever and you are recommended to directly contact the Foreign Investment Review Board (www.firb.gov.au) to seek appropriate guidance. Not for commercial use without prior written consent. © Exfin International Pty Ltd 2017

The Purchase of **NEW** Residential Property in Australia – Regulatory Flowchart – Part 2

